



**Appendix E: Maryland's Nutrient Load Analysis Spreadsheet**

**Table 1. Annual Average TN and TP non-point source loads to the Chester and Wye Rivers, Queenstown Planning Area**

Watershed	Growth Scenario	Total Nitrogen (kg/year)			Total
		Croplands	Development	Forest	
Chester	Current	10537	3434	533	23252
	County	26306	2836	1071	43897
	Consolidated	8621	3891	636	21950
Wye	Current	20187	5967	1128	43958
	County	9103	3439	636	21926
	Consolidated	22667	3860	1098	41310

**Table 2. Annual Average TP non-point source loads to the Chester and Wye Rivers, Queenstown Planning Area**

Watershed	Growth Scenario	Total Phosphorus (kg/year)			Total
		Croplands	Development	Forest	
Chester	Current	731	471	8	1210
	County	1841	359	16	2216
	Consolidated	599	526	10	1135
Wye	Current	1415	781	17	2213
	County	670	458	10	1138
	Consolidated	1779	487	17	2282

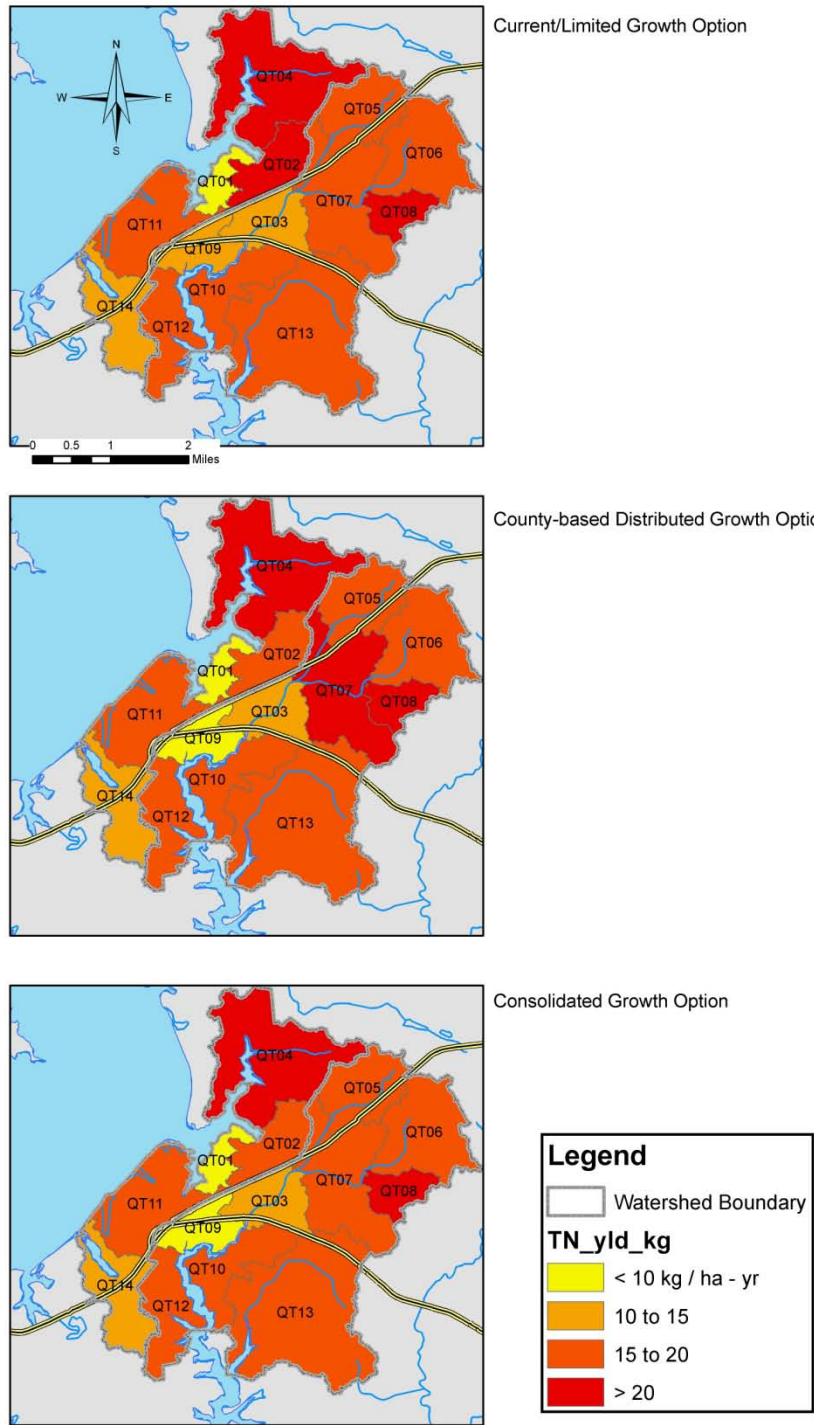


Fig. 1. Annual average total nitrogen (TN) yields associated with alternative land use/land cover configurations in the Queenstown Planning Area. a) Current conditions according to 2001 National Land Cover Data; b) future distributed growth scenario assuming full build out under county zoning; and c) future consolidated growth scenario in which all growth occurs adjacent to the current municipality with comparable low-to-medium residential density.



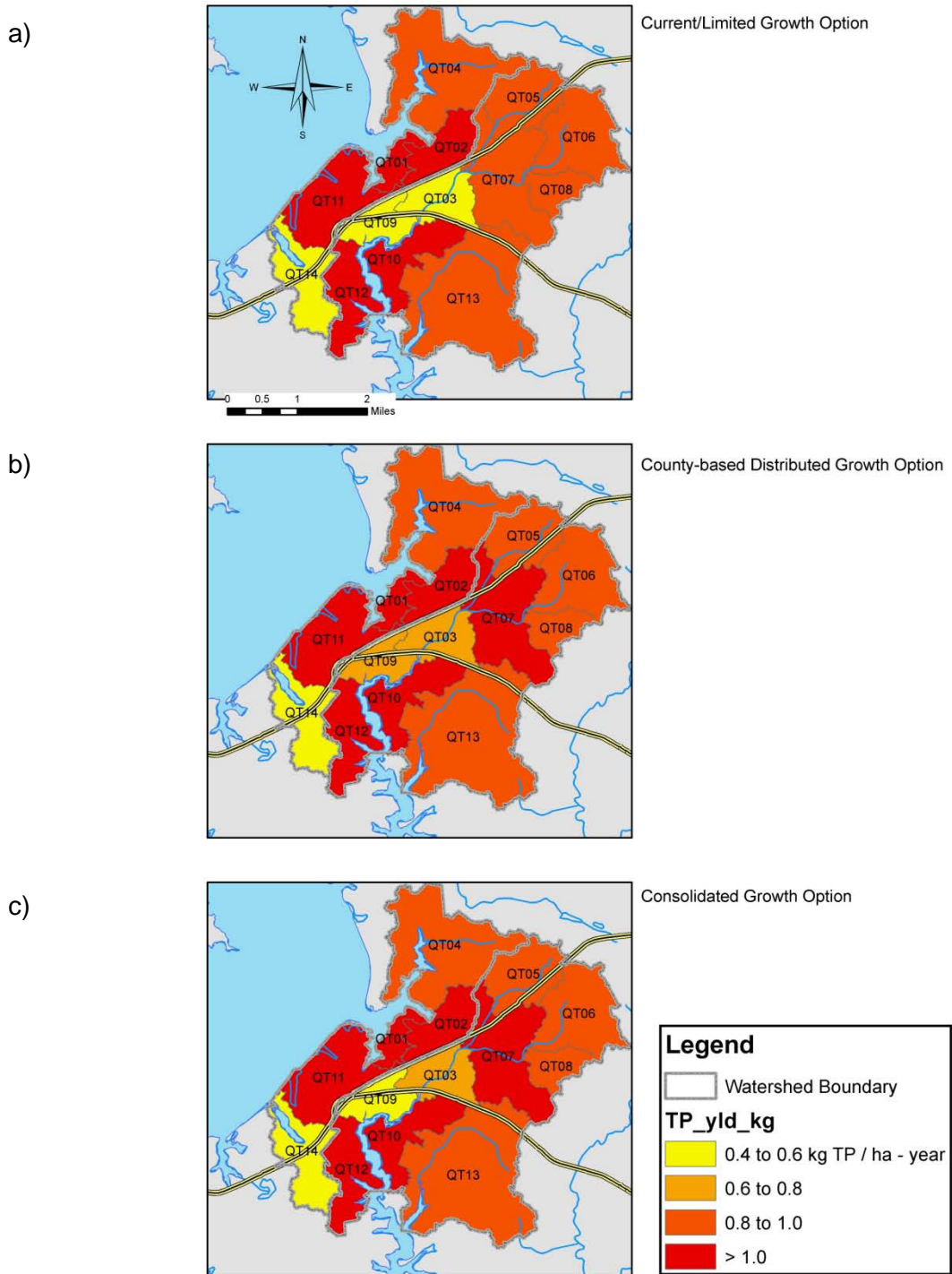


Fig. 2. Annual average total phosphorus (TP) yields associated with alternative land use/land cover configurations in the Queenstown Planning Area. a) Current conditions according to 2001 National Land Cover Data; b) future distributed growth scenario assuming full build out under county zoning; and c) future consolidated growth scenario in which all growth occurs adjacent to the current municipality with comparable low-to-medium residential density.